



# EXPOSING THE CORE

Introduction to SQL 2012 on Server Core



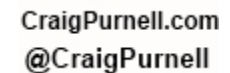
# SQL Saturday #144 After Party

Sponsored by  at 

Light food and drinks will be served!!  
6PM to ?

1369 Garden Highway  
Sacramento, CA  
Phone: 916-649-0390

# Thank you to our Sponsors



# Mike Fal

Working with SQL Server since MSSQL 7.

Experience with different industries.

No cool letters after my name. ;\_;

Blog – [www.mikefal.net](http://www.mikefal.net)

Twitter – @Mike\_Fal



# Finish Line

- ▶ Just what the heck is SQL on Server Core?
- ▶ What will I need to know to manage Server Core?
- ▶ How do I set up a Server Core instance for SQL Server?
- ▶ How do I install SQL 2012 on Server Core?

# What is Server Core?

- ▶ Server 2008/2012 with (most of) the GUI interface removed
- ▶ Smaller footprint
  - Less resources used by the OS
  - More secure
- ▶ Must be managed by command line and remote tools (Powershell)

# Moment of Zen



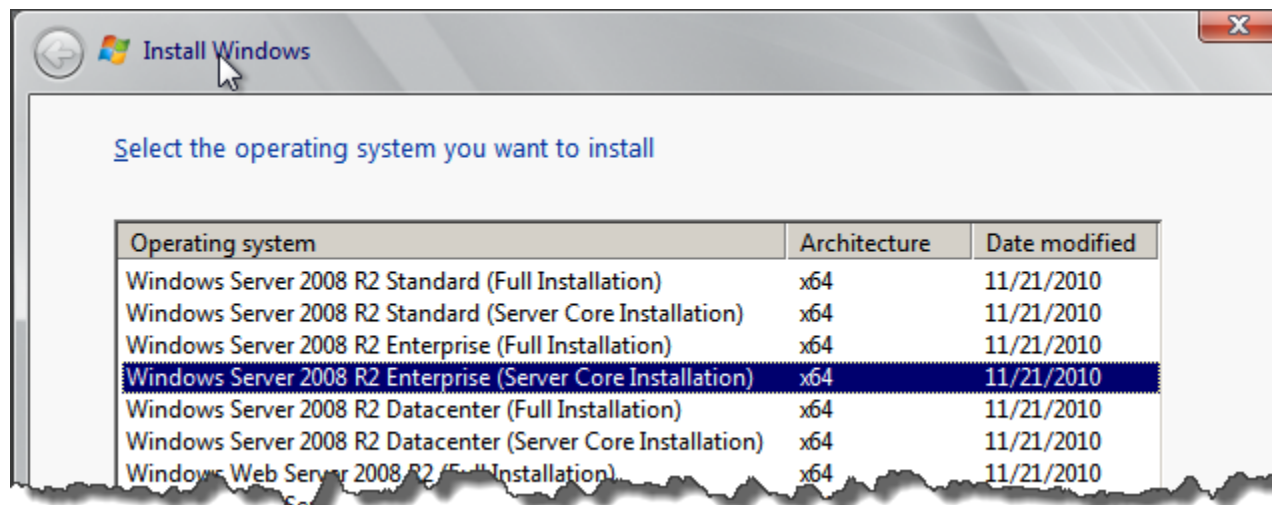
*Free  
Yourself  
From the GUI*

# Server Core Support

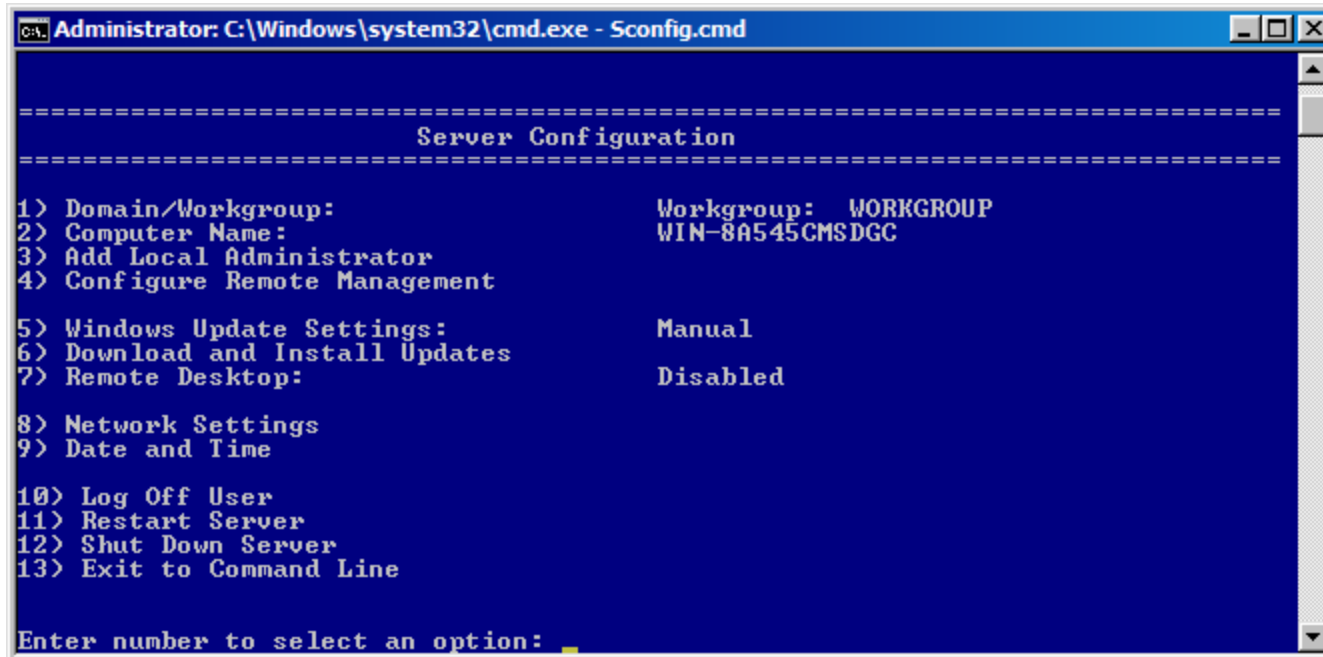
Feature	Supported
Database Engine Services	Yes
SQL Server Replication	Yes
Full Text Search	Yes
Analysis Services	Yes
Reporting Services	No
SQL Server Data Tools (SSDT)	No
Client Tools Connectivity	Yes
Integration Services Server[1]	Yes
Client Tools Backward Compatibility	No
Client Tools SDK	No
SQL Server Books Online	No
Management Tools – Basic	Remote Only[2]
Management Tools – Complete	Remote Only[2]
Distributed Replay Controller	No
Distributed Replay Client	Remote Only[2]
SQL Client Connectivity SDK	No
Microsoft Sync Framework	Yes[3]
Master Data Services	No
Data Quality Services	No



# Installation



# Configuration



A screenshot of a Windows command prompt window titled "Administrator: C:\Windows\system32\cmd.exe - Sconfig.cmd". The window has a blue background and displays the "Server Configuration" menu. The menu is framed by dashed lines and lists 13 numbered options. To the right of the first four options, their current settings are displayed. At the bottom, a prompt asks the user to "Enter number to select an option:" followed by a cursor.

```
Administrator: C:\Windows\system32\cmd.exe - Sconfig.cmd

=====
Server Configuration
=====

1> Domain/Workgroup:           Workgroup:  WORKGROUP
2> Computer Name:             WIN-8A545CMSDGC
3> Add Local Administrator
4> Configure Remote Management

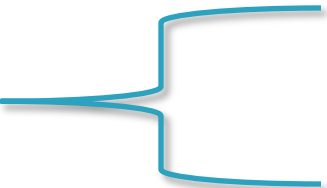
5> Windows Update Settings:    Manual
6> Download and Install Updates
7> Remote Desktop:             Disabled

8> Network Settings
9> Date and Time

10> Log Off User
11> Restart Server
12> Shut Down Server
13> Exit to Command Line

Enter number to select an option: _
```

# Requirements



Requirement	How to install
.NET Framework 2.0 SP2	Not included in Windows Server 2012, must be installed.
.NET Framework 3.5 SP1 Full Profile	Not included in Windows Server 2012, must be installed.
.NET Framework 4 Server Core Profile	Shipped with Windows Server 2012.
Windows Installer 4.5	Shipped with Windows Server 2012
Windows PowerShell 2.0	Powershell 3.0 shipped with Windows Server 2012.

# SQL Server Installation

```
Administrator: powershell.exe -noexit -command "import-module ServerManager"
Directory: E:\

Mode                LastWriteTime         Length Name
----                -
d-----         11/10/2011      8:03 PM          1033_ENU_LP
d-----         11/10/2011      8:03 PM        StreamInsight
d-----         11/10/2011      8:03 PM          Tools
d-----         11/10/2011      8:04 PM         redist
d-----         11/10/2011      8:03 PM        resources
d-----         11/10/2011      8:04 PM          x64
d-----         11/10/2011      8:05 PM          x86
-r-----         11/6/2011       2:05 PM       208 MediaInfo.xml
-r-----        10/29/2011       8:41 AM        45 autorun.inf
-r-----         11/5/2011     10:10 AM    191328 setup.exe
-r-----        10/29/2011       7:41 AM       329 setup.exe.config
-r-----         11/5/2011     10:00 AM    140128 sqmapi.dll

PS E:\> .\setup.exe /CONFIGURATIONFILE="C:\ServerCoreSetup\SQL2012_Core.ini"
```

# Finish Line

- ▶ Just what the heck is SQL on Server Core?
- ▶ What will I need to know to manage Server Core?
- ▶ How do I set up a Server Core instance for SQL Server?
- ▶ How do I install SQL 2012 on Server Core?

# Resources

- ▶ Allen White (@SQLRunr)  
[http://sqlblog.com/blogs/allen\\_white/default.aspx](http://sqlblog.com/blogs/allen_white/default.aspx)
- ▶ Denny Cherry (@mrdenny)  
<http://www.mrdenny.com/>
- ▶ Allen Hirt (@SQLHA)  
<http://www.sqlha.com/blog/>
- ▶ MSDN  
<http://msdn.microsoft.com/en-us/library/hh231669.aspx>

# Questions

# HUH?

[www.mikefal.net](http://www.mikefal.net)

@Mike\_Fal

